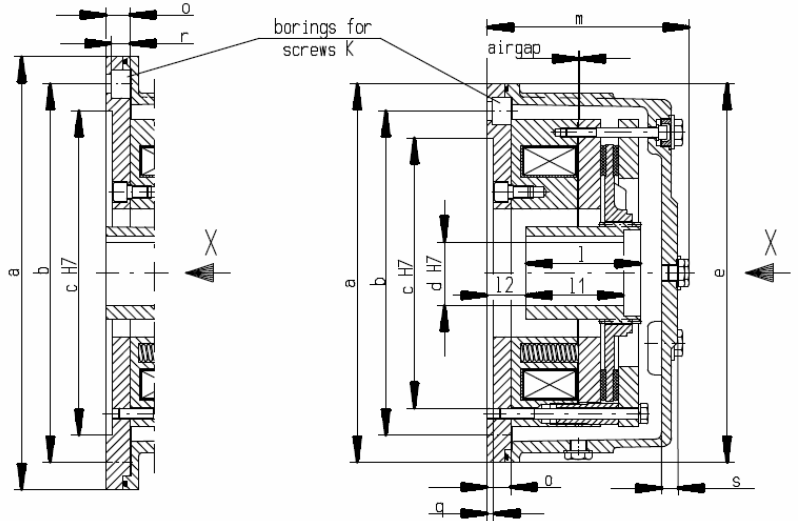
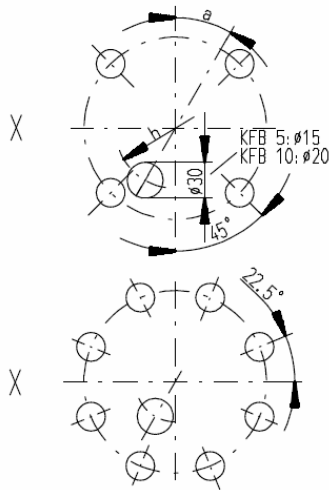


# KFB Electromagnetic Double-Disc Spring-Applied Brake



Bolthole circle on flanges (DIN EN 50347)  
for screws K



Passing on as well as duplication of this base, utilisation and communication of her contents does not permit, until expressly conceded. Offence oblige for compensation. All rights for the case of the patent explanation or utility model registration reserve.  
 © DELLNER BUBENZER GmbH, Kirchen

Weitergabe sowie Vervielfältigung dieser Unterlage, Verwendung und Mitteilung ihres Inhaltes nicht gestattet, soweit nicht ausdrücklich zugelassen. Zuwiderhandlung verpflichten zu Schadensersatz. Alle Rechte für den Fall der Patentklärung oder Gebrauchsmuster-Eintragung vorbehalten.  
 © DELLNER BUBENZER GmbH, Kirchen

Brake size		KFB 5	KFB 10	KFB 16	KFB 25	KFB 30	KFB 40	KFB 63	KFB 100	KFB 160
Brake torque M2 <sup>1)</sup> dynamic acc. to DIN VDE 0580	Nm	50	100	160	250	300	400	630	1000	1600
Mass moment of inertia	kgm <sup>2</sup>	0,0010	0,0017	0,0037	0,0048	0,0055	0,0068	0,0175	0,036	0,050
Mass (weight)	kg	15	19	25	42	47	52	72	104	150
max. idle speed	min <sup>-1</sup>	6000	6000	6000	6000	6000	5500	4700	4000	3600
Coil at 20°C	Nominal voltage	V DC	110	110	110	110	110	110	110	110
	Nominal power	W	79	93	128	158	133	196	220	307
	Nominal current	A	0,72	0,84	1,16	1,44	1,20	1,78	2,00	2,79
Airgap OFF	normal	mm	0,3	0,3	0,3	0,3	0,3	0,4	0,4	0,4
	maximum	mm	0,8	1,0	1,0	1,2	0,9	1,2	1,3	1,5
Diameter mm	B-Side	d pilot bore	8	26	26	36	26	36	36	36
		d <sup>H7</sup> preferential bore	15	28	28	38	32	38	42	60
			20	32	32	42	38	42	48	65
				38	38	48	42	48	55	75
		d <sup>H7</sup> maximum	25	42	42	55	45	55	60	80
	e	160/200	200/250	253/303	300/350	250/300	303/350	350/400	400/450	
	h	93	106	144	194	144	194	214	267	
Length mm	l	60	110	96	117	137	117	142	148	
	l <sub>1</sub> standard	60	110	96	117	137	117	142	142	
	l <sub>1</sub> with tachometer	53	107	93	114	132	114	138	138	
	l <sub>2</sub>	50	0	0	0	0	0	0	0	
	m	145	154	141	165	175	175	187	196	
	s	13	15	15	15	15	15	15	15	
Angle	α°	22,5	30	30	30	67,5	30	30	30	
Suitable standard intermediate flanges	A160	A200	A250-1	A300-1	A250-1	A300-1	A350	A400-1	A450-1	
	A200	A250	A300	A350	A300-1	A350	A400	A450	A550	

<sup>1)</sup> Measured at 1m/s; Values are only achieved after running-in process; other brake torque on request

### Dimensions of standard intermediate flanges

Standard flange	A160	A200	A250	A250-1	A300	A300-1	A350	A400	A400-1	A450	A450-1	A550
Diameter mm	a	160	200	250	250	300	300	350	400	400	450	550
	b	130	165	215	218	265	265	300	350	350	400	500
	c H <sup>7</sup>	110	130	180	180	230	230	250	300	300	350	450
Length mm	o	18	18	18	20	20	22	22	29	29	31	31
	q	5	5	5	5	5	6	6	6	6	6	6
	r	11	11	13	13	13	13	17,5	17,5	17,5	17,5	17,5
	Screws k	4xM8	4xM10	4xM12	4xM12	4xM12	4xM12	4xM16	4xM16	4xM16	8xM16	8xM16

Keyways for keys acc. to DIN 6885/1; width accuracy P9  
Protection IP67

Subject to change without notice

Version		Datum	Name	8-A01100400953	Blatt 1 von 1
H/8-THO21016	Erstellt	10.06.2021	THO		
	Geprüft	14.06.2021	THO		
	Freigegeben	17.06.2021	DIR		

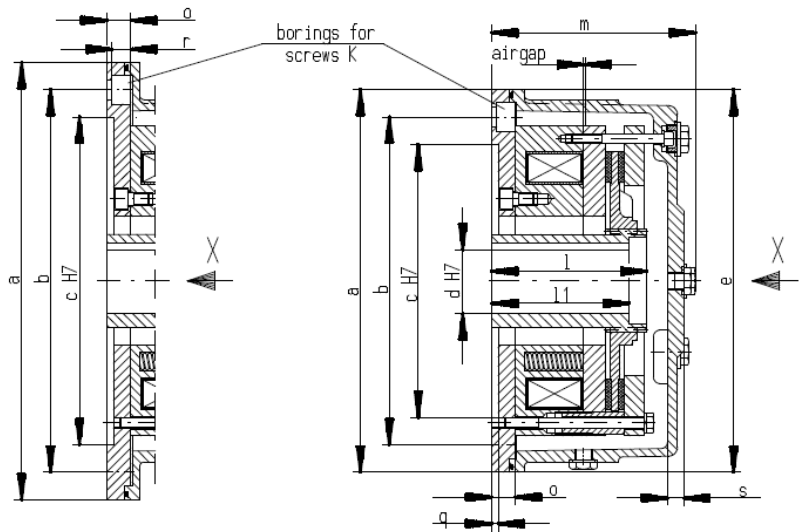
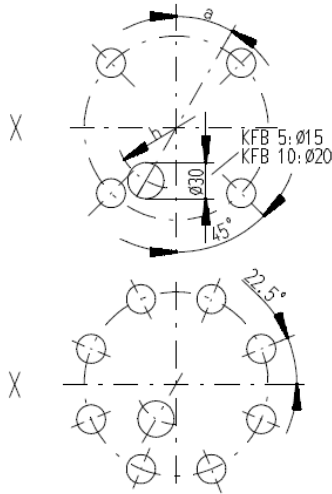
KFB

Electromagnetic Double-Disc Spring-Applied Brake



Increased torque

Bolthole circle on flanges (DIN 42948)  
for screws K



Passing on as well as duplication of this base, utilisation and communication of her contents does not permit, until expressly conceded. Offence oblige for compensation. All rights for the case of the patent explanation or utility model registration reserve.  
 © DELLNER BUBENZER GmbH, Kirchen

Weitergabe sowie Vervielfältigung dieser Unterlage, Verwertung und Mitteilung ihres Inhaltes nicht gestattet, soweit nicht ausdrücklich zugelassen. Zuwiderhandlung verpflichten zu Schadensersatz. Alle Rechte für den Fall der Patentklärung oder Gebrauchsmuster-Eintragung vorbehalten.  
 © DELLNER BUBENZER GmbH, Kirchen

Brake size		KFB 40/47	KFB 63/70				
Brake torque M2 ) <sup>1</sup>	Nm	470	700				
dynamic acc. to DIN VDE 0580							
Mass moment of inertia	kgm <sup>2</sup>	0,0068	0,0175				
Mass (weight)	kg	52	72				
max. idle speed	min <sup>-1</sup>	5500	4700				
Coil at 20°C	Nominal voltage	V DC	110	110			
	Nominal power	W	196	220			
	Nominal current	A	1,78	2,00			
Airgap OFF	normal	mm	0,3	0,4			
	maximum	mm	1,2	1,3			
Diameter mm	B-Side	d pilot bore	36	36			
		d H7	38	42			
		preferential bore	42	48			
			48	55			
		d H7/ maximum	55	60			
e	303/350	350/400					
Length mm	h	194	214				
	l	117	142				
	l <sub>1</sub> standard	117	142				
	l <sub>1</sub> with tachometer	114	138				
	m	175	187				
	s	15	15				
Angle	α°	30	30				
Suitable standard Intermediate flanges		A300-1	A350				
		A350	A400				

)<sup>1</sup>: Measured at 1m/s; Values are only achieved after running-in process; other brake torque on request

Dimensions of standard intermediate flanges

Standard intermediate flange		A300-1	A350	A400			
Dia-meter mm	a	300	350	400			
	b	265	300	350			
	c H7	230	250	300			
Length mm	o	22	22	22			
	q	5	6	6			
	r	13	17,5	17,5			
	Screws k	4xM12	4xM16	4xM16			

Keyways for keys acc. to DIN 6885/1; width accuracy P9  
Protection IP67

Subject to change without notice

Version	Datum	Name	8-A01100402953	Blatt 1 von 1	
A/8-THO21016	Erstellt	10.06.2021			THO
	Geprüft	14.06.2021			THO
	Freigegeben	17.06.2021	DIR		